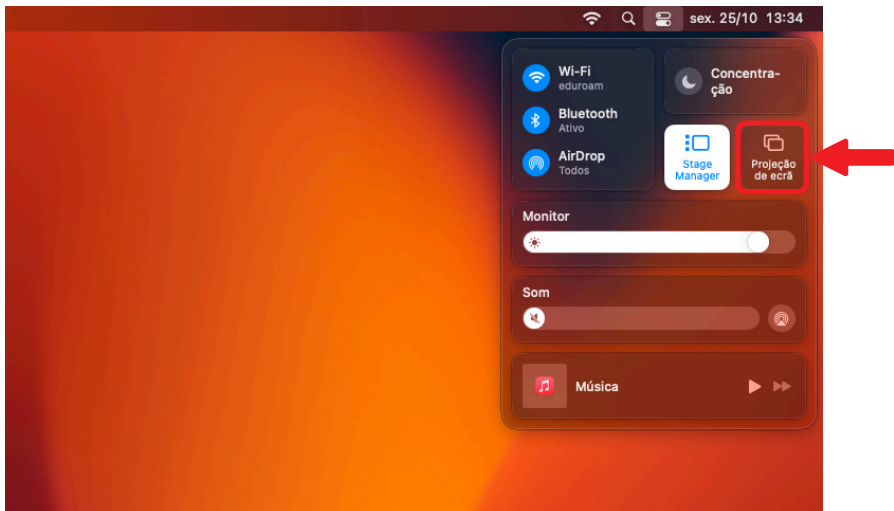


Partilha de ecrã de dispositivo, no MacOS

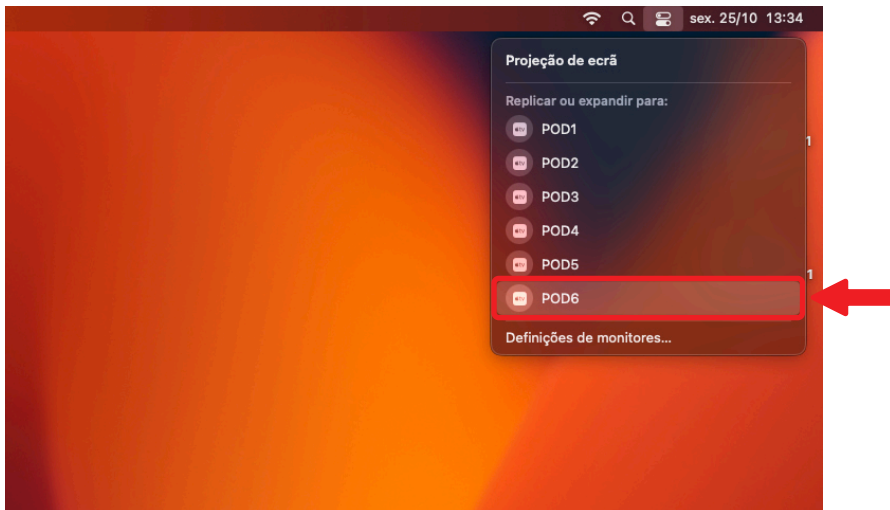
1. Na barra de menus, clique na **Central de controlo**.



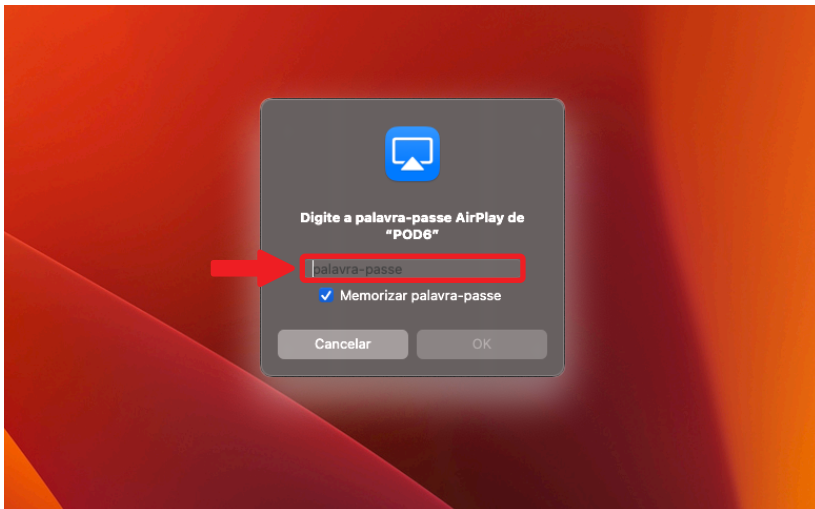
2. Clique na **Projeção de ecrã**.



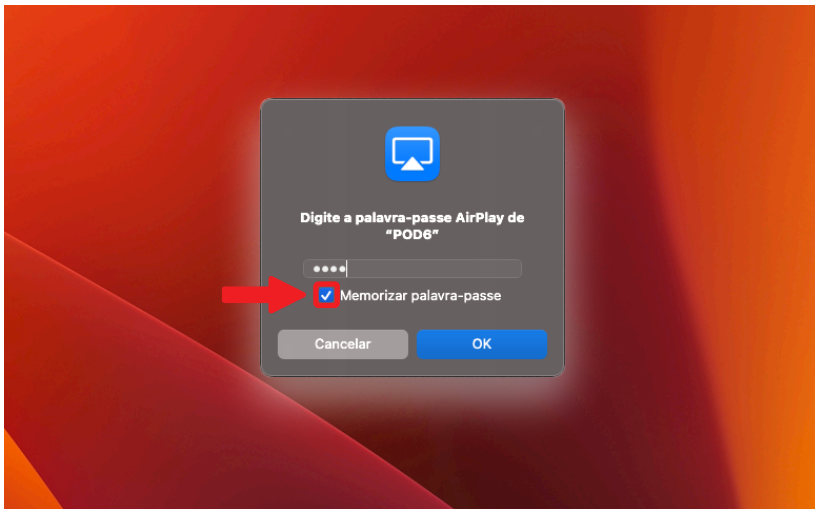
3. Seleccione o **Pod** pretendido.



4. Insira a palavra-passe do **Pod** que surge no ecrã.



5. Desmarque a opção **Memorizar palavra-passe**.



6. Clique em **OK**.

